

2D Modeling Update

3/13/2025

2D Model Pilot Project

What:

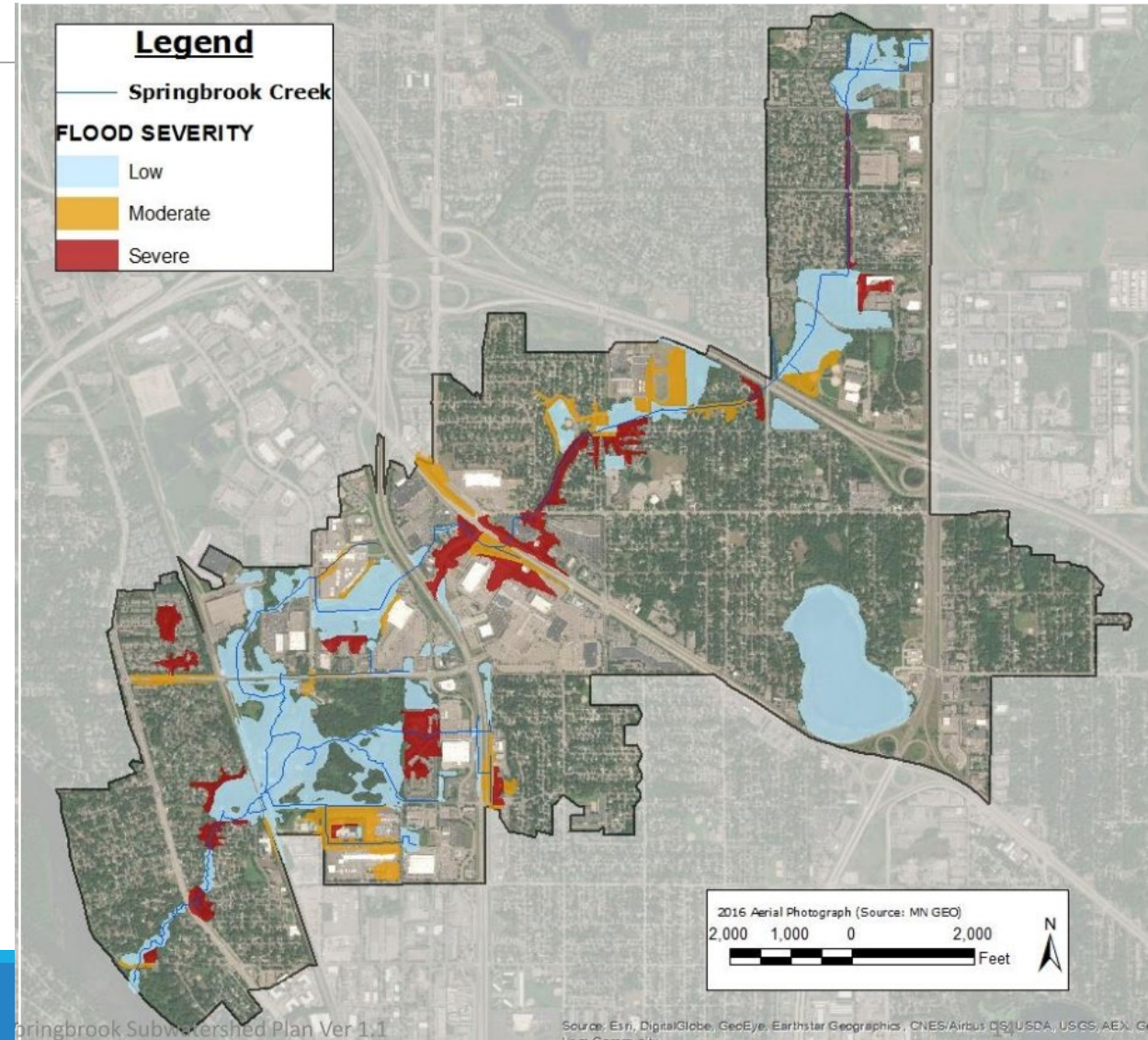
Pilot 2D model for Springbrook Creek in 2025

Watershed model uses a 1D model

2D model is more refined at small scale

More detailed stormsewer network info

Depth and duration simulation maps



2D Model Pilot Project

Why:

Better refinement at small scale vs watershed

Better overland flow modeling

Better analysis and design of flood mitigation projects

Better visualization of depth and duration of flood impacts

Running multiple scenarios



2D Model Pilot Project

How:

Stantec gathering stormsewer as-builts from Cities

Final model to be completed this year

Will not be used for regulatory purposes