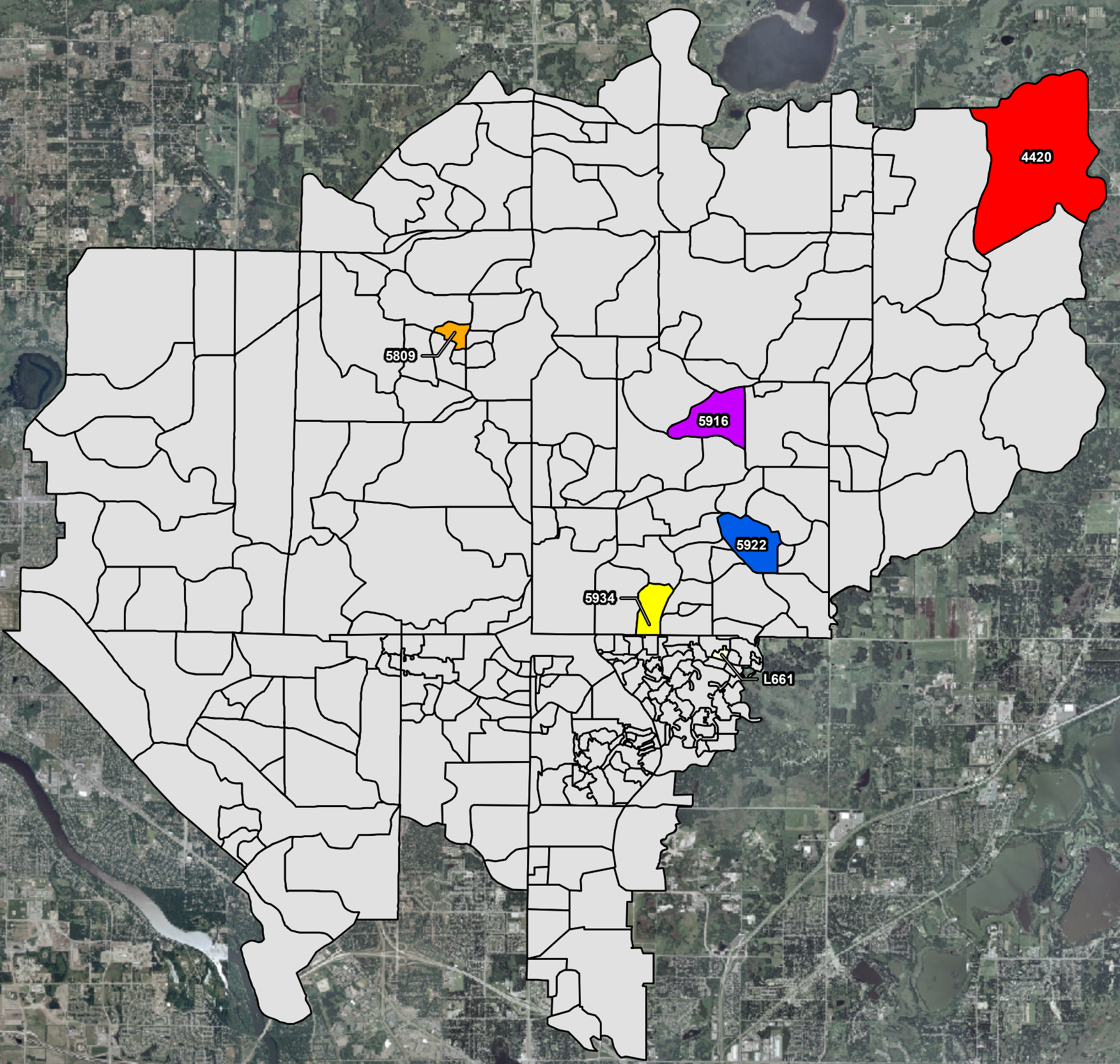


**Legend**

TSS Load Decrease in lbs. from 1990 to 2000  
**TSS Load Increase in lbs. from 1990 to 2000**  
 12 lb Increase  
 59 lb Increase  
 182 lb Increase  
 444 lb Increase  
 960 lb Increase  
 1004 lb Increase



Subwatershed ID	TSS Load Increase in lbs. from 1990 to 2000
L661	12
5934	59
5809	182
4420	444
5916	960
5922	1,004

2003 Aerial Photograph (Source: LMIC)

2 1 0 2 Miles

Mxd: L:\1239\26\mxd file\Final Figs\TSS Increase from 1990 to 2000.mxd  
 Last Modified: 6/7/2007 9:23:48 AM