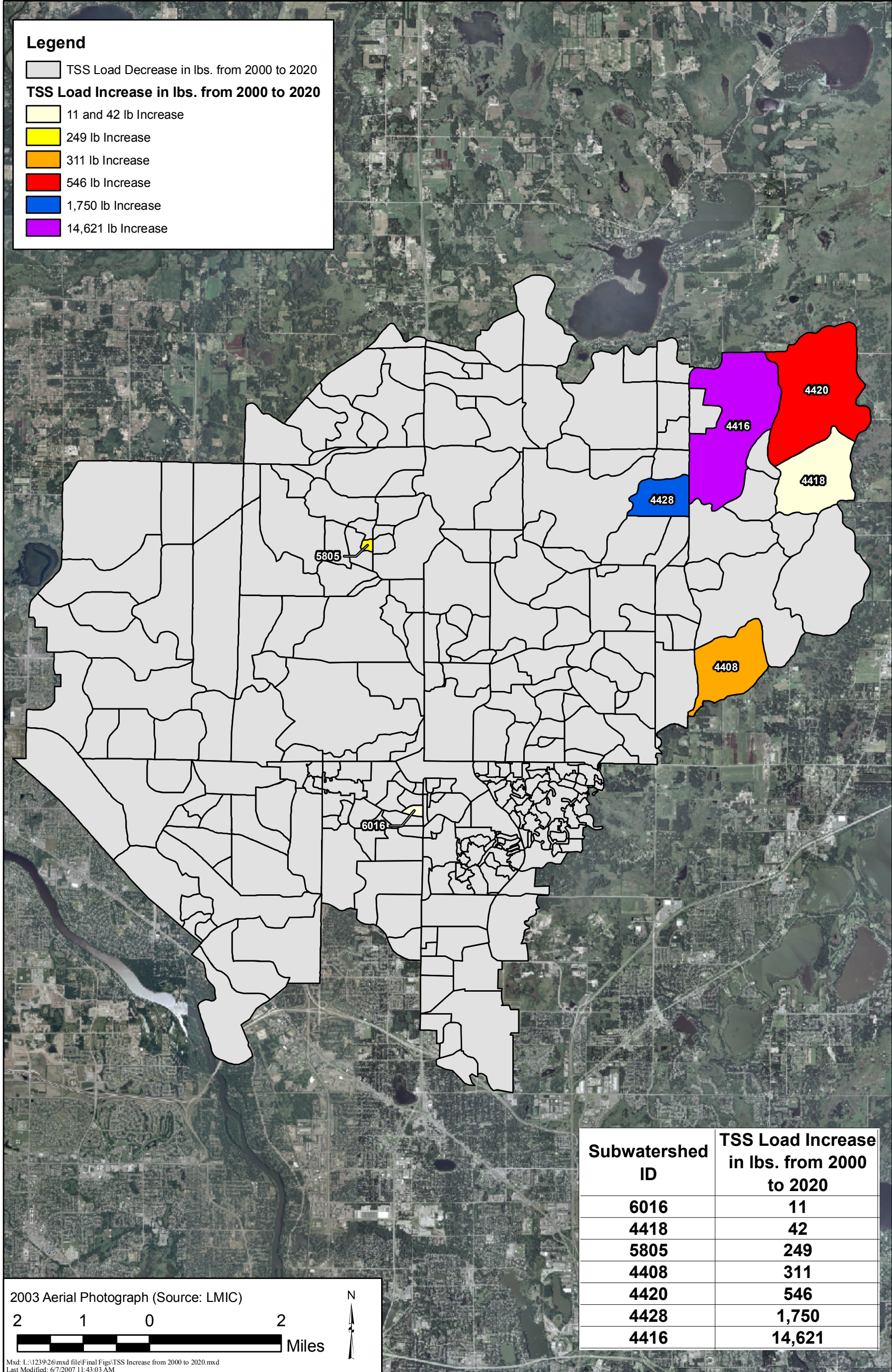
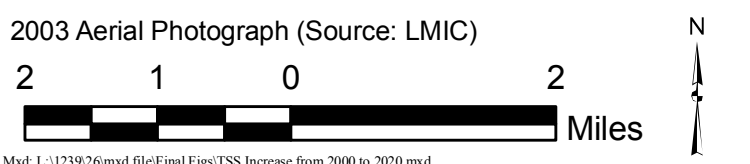


**Legend**

- TSS Load Decrease in lbs. from 2000 to 2020
- TSS Load Increase in lbs. from 2000 to 2020**
- 11 and 42 lb Increase
- 249 lb Increase
- 311 lb Increase
- 546 lb Increase
- 1,750 lb Increase
- 14,621 lb Increase



Subwatershed ID	TSS Load Increase in lbs. from 2000 to 2020
6016	11
4418	42
5805	249
4408	311
4420	546
4428	1,750
4416	14,621



Mxd: L:\1239\26\mxd file\Final Figs\TSS Increase from 2000 to 2020.mxd  
Last Modified: 6/7/2007 11:43:03 AM

**COON CREEK WATERSHED DISTRICT**

**Subwatershed TSS Increase from 2000 to 2020**

**Wenck**  
Wenck Associates, Inc. 1800 Pioneer Creek Center  
Environmental Engineers Maple Plain, MN 55359-0429

JUN 2007

Figure 9