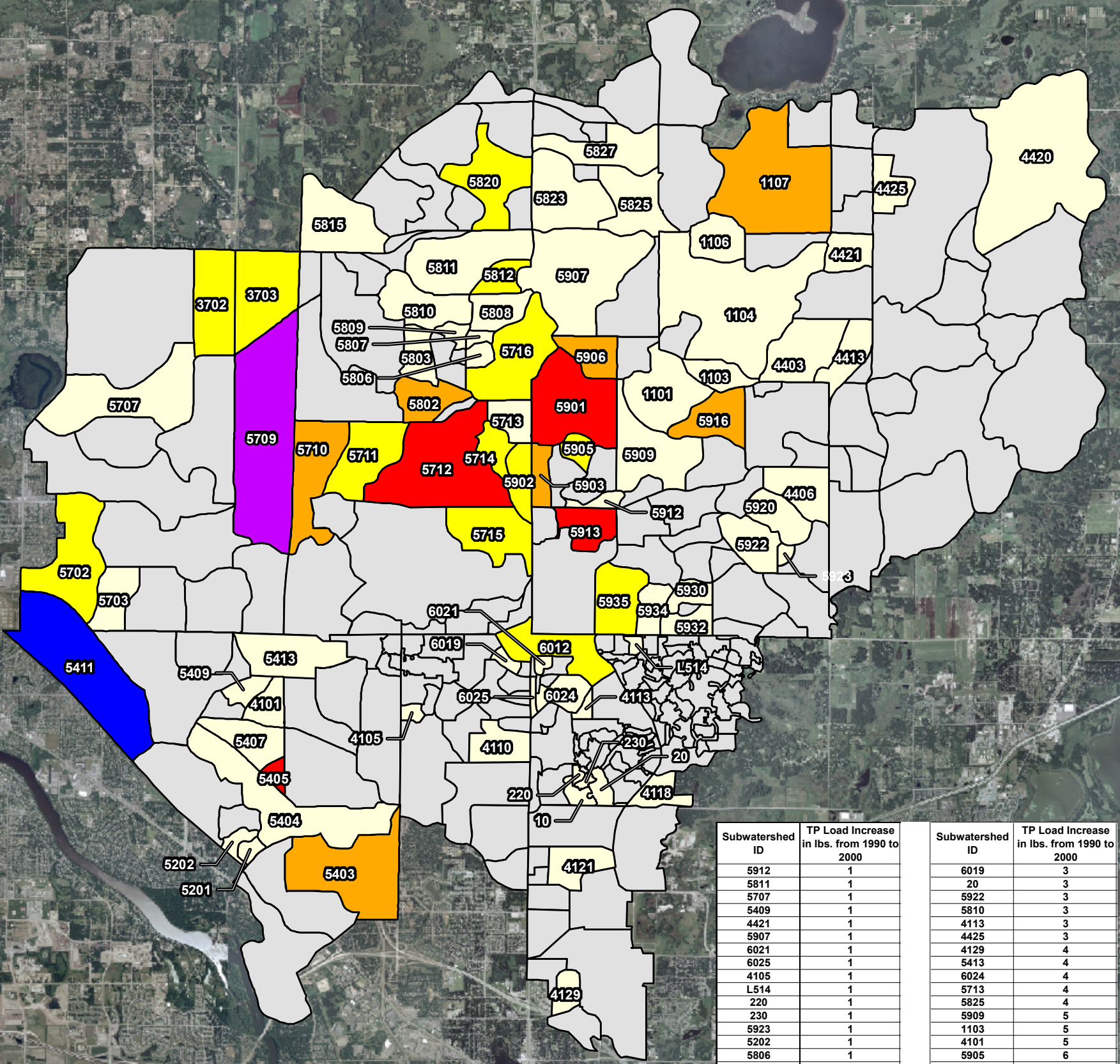
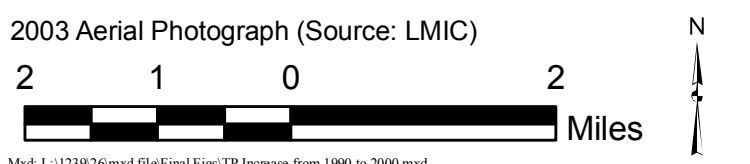


**Legend**

- TP Load Decrease in lbs. from 1990 to 2000
- TP Load Increase in lbs. from 1990 to 2000**
- 1-5 lb Increase
- 6-10 lb Increase
- 11-14 lb Increase
- 15-20 lb Increase
- 48 lb Increase
- 71 lb Increase



| Subwatershed ID | TP Load Increase in lbs. from 1990 to 2000 | Subwatershed ID | TP Load Increase in lbs. from 1990 to 2000 |
|-----------------|--|-----------------|--|
| 5912            | 1  | 6019            | 3  |
| 5811            | 1  | 20              | 3  |
| 5707            | 1  | 5922            | 3  |
| 5409            | 1  | 5810            | 3  |
| 4421            | 1  | 4113            | 3  |
| 5907            | 1  | 4425            | 3  |
| 6021            | 1  | 4129            | 4  |
| 6025            | 1  | 5413            | 4  |
| 4105            | 1  | 6024            | 4  |
| L514            | 1  | 5713            | 4  |
| 220             | 1  | 5825            | 4  |
| 230             | 1  | 5909            | 5  |
| 5923            | 1  | 1103            | 5  |
| 5202            | 1  | 4101            | 5  |
| 5806            | 1  | 5905            | 6  |
| 5807            | 1  | 3702            | 6  |
| 4121            | 1  | 5702            | 6  |
| 4420            | 2  | 5711            | 6  |
| 4403            | 2  | 5714            | 6  |
| 1101            | 2  | 6012            | 6  |
| 4406            | 2  | 5812            | 7  |
| 5808            | 2  | 5935            | 7  |
| 5827            | 2  | 5716            | 8  |
| 5823            | 2  | 5820            | 8  |
| 1104            | 2  | 5902            | 9  |
| 5934            | 2  | 3703            | 10   |
| 5932            | 2  | 5715            | 10   |
| 5930            | 2  | 5903            | 11   |
| 5920            | 2  | 5403            | 11   |
| 5201            | 2  | 5906            | 12   |
| 5703            | 2  | 5802            | 12   |
| 5803            | 2  | 5916            | 13   |
| 5809            | 2  | 1107            | 13   |
| 4110            | 3  | 5710            | 14   |
| 4118            | 3  | 5913            | 15   |
| 5815            | 3  | 5901            | 15   |
| 4413            | 3  | 5405            | 15   |
| 5407            | 3  | 5712            | 20   |
| 5404            | 3  | 5709            | 48   |
| 1106            | 3  | 5411            | 71   |
| 10              | 3  |                 |  |



Mxd: L:\1239\26\mxd file\Final Figs\TP Increase from 1990 to 2000.mxd  
Last Modified: 6/7/2007 9:46:08 AM

**COON CREEK WATERSHED DISTRICT**

**Subwatershed TP Increase from 1990 to 2000**

COPYRIGHT

**Wenck**  
Wenck Associates, Inc. 1800 Pioneer Creek Center  
Environmental Engineers Maple Plain, MN 55359-0429

JUN 2007

Figure 10