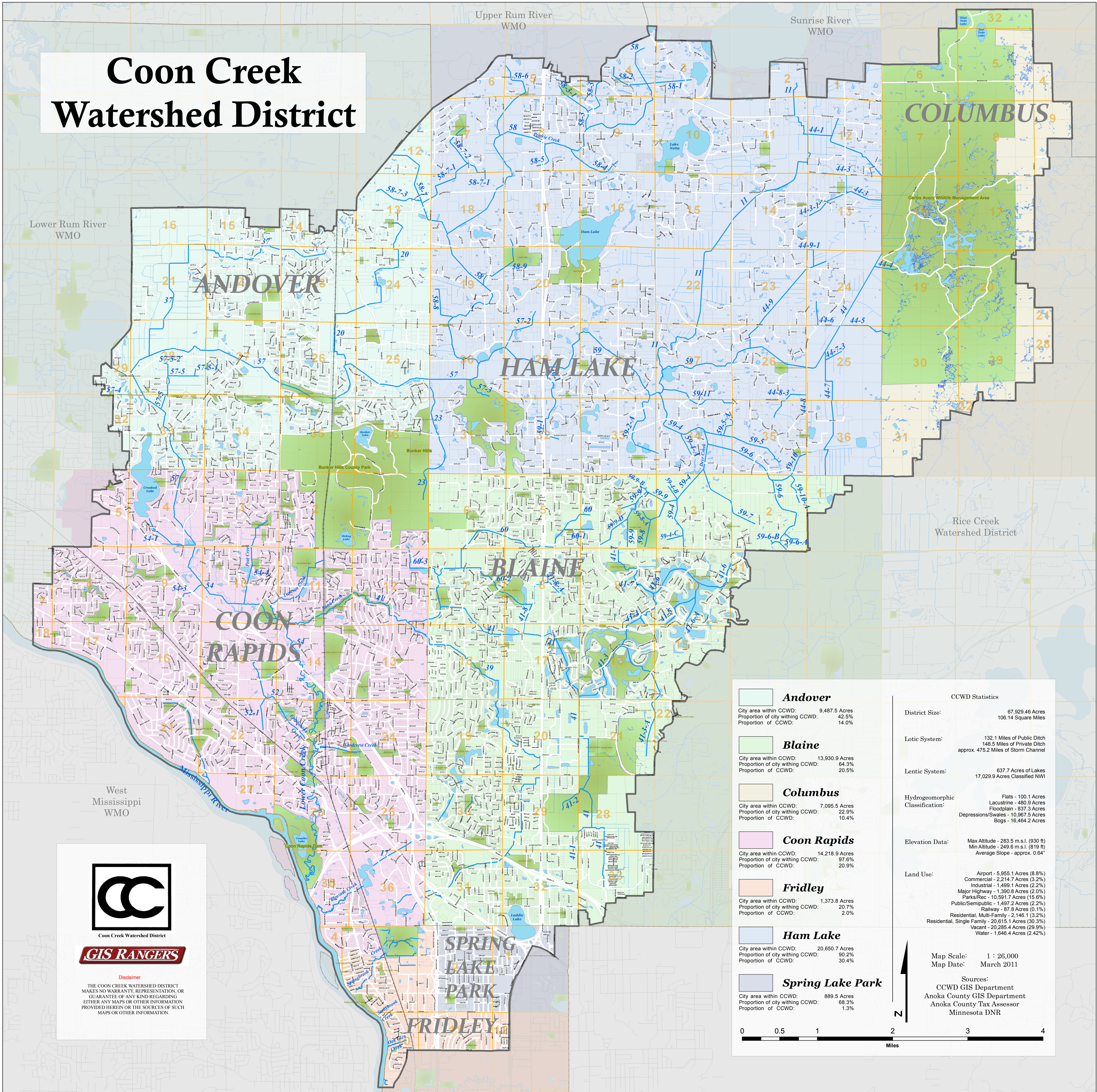


# Coon Creek Watershed District



City Statistics		CCWD Statistics	
<b>Andover</b>	City area within CCWD: 9,487.5 Acres Proportion of city within CCWD: 42.5% Proportion of CCWD: 14.0%	<b>District Size:</b>	67,929.46 Acres 106.14 Square Miles
<b>Blaine</b>	City area within CCWD: 13,930.9 Acres Proportion of city within CCWD: 64.3% Proportion of CCWD: 20.5%	<b>Lotic System:</b>	132.1 Miles of Public Ditch 148.5 Miles of Private Ditch approx. 475.2 Miles of Storm Channel
<b>Columbus</b>	City area within CCWD: 7,095.5 Acres Proportion of city within CCWD: 22.9% Proportion of CCWD: 10.4%	<b>Lentic System:</b>	637.7 Acres of Lakes 17,029.9 Acres Classified NWI
<b>Coon Rapids</b>	City area within CCWD: 14,218.9 Acres Proportion of city within CCWD: 97.6% Proportion of CCWD: 20.9%	<b>Hydrogeomorphic Classification:</b>	Flats - 100.1 Acres Lacustrine - 480.9 Acres Floodplain - 837.3 Acres Depressions/Swales - 10,967.5 Acres Bogs - 16,464.2 Acres
<b>Fridley</b>	City area within CCWD: 1,373.8 Acres Proportion of city within CCWD: 20.7% Proportion of CCWD: 2.0%	<b>Elevation Data:</b>	Max Altitude - 283.5 m.s.l. (930 ft) Min Altitude - 249.6 m.s.l. (819 ft) Average Slope - approx. 0.64'
<b>Ham Lake</b>	City area within CCWD: 20,650.7 Acres Proportion of city within CCWD: 90.2% Proportion of CCWD: 30.4%	<b>Land Use:</b>	Airport - 5,955.1 Acres (8.8%) Commercial - 2,214.7 Acres (3.2%) Industrial - 1,499.1 Acres (2.2%) Major Highway - 1,390.8 Acres (2.0%) Parks/Rec - 10,591.7 Acres (15.6%) Public/Semipublic - 1,497.2 Acres (2.2%) Railway - 87.8 Acres (0.1%) Residential, Multi-Family - 2,146.1 (3.2%) Residential, Single Family - 20,615.1 Acres (30.3%) Vacant - 20,285.4 Acres (29.9%) Water - 1,646.4 Acres (2.42%)
<b>Spring Lake Park</b>	City area within CCWD: 889.5 Acres Proportion of city within CCWD: 68.3% Proportion of CCWD: 1.3%	<b>Map Scale:</b>	1 : 26,000
		<b>Map Date:</b>	March 2011
		<b>Sources:</b>	CCWD GIS Department Anoka County GIS Department Anoka County Tax Assessor Minnesota DNR



**GIS RANGERS**

**Disclaimer**  
THE COON CREEK WATERSHED DISTRICT MAKES NO WARRANTY, REPRESENTATION, OR GUARANTEE OF ANY KIND REGARDING EITHER ANY MAPS OR OTHER INFORMATION PROVIDED HEREIN OR THE SOURCES OF SUCH MAPS OR OTHER INFORMATION.