

# Aquatic Plant Community of Crooked Lake: 2019

Anoka County, MN (#02-0084)

Surveyed August 8, 2019



**Surveying, Analysis, and Reporting by:**  
*James A. Johnson – Freshwater Scientific Services, LLC*



**Funded by:**  
*Crooked Lake Area Association*

## Survey & Analysis Methods

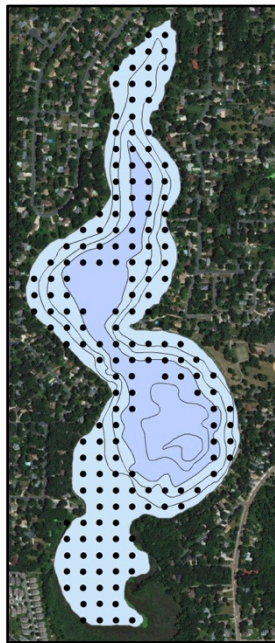
### Point-Intercept Aquatic Plant Survey

Freshwater Scientific Services conducted a lake-wide aquatic plant survey for Crooked Lake on August 8, 2019 using the point-intercept method described by Madsen (1999). This survey incorporated assessments at a total of 183 sample points (149 littoral;  $\leq 15$  ft) arranged in a uniform grid (45-m spacing; Figs 1 and 2). We generated these sample points using desktop GIS software to project a grid of points over an aerial image of the lake. We then loaded the selected sample locations onto a handheld GPS unit (Garmin GPSMAP-78) for navigation to each point while in the field.

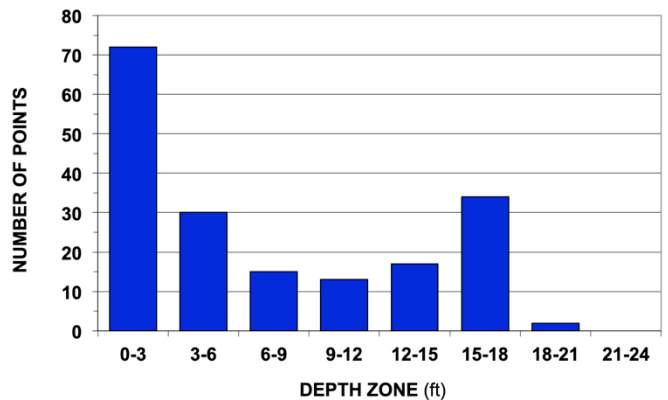
At each designated sample location, we collected plants using a double-headed, 14-tine rake on a on a rope. For each rake sample, we dragged the rake over the lake bottom for approximately 5 ft before retrieving. Retrieved plants were piled on top of the rake head and assigned density scores from 1 to 4 based upon rake head coverage (Table 3) for each individual species and for all plants collectively.

We calculated the littoral frequency ( $\leq 15$  ft, % occurrence) and littoral mean density score (plant abundance) for each encountered plant species (Table 1), as well as lake-wide and littoral plant community metrics (Table 2). We also used desktop GIS software to map the distribution and abundance of plants in the lake (pages 5–9). Additional species that were observed floating or growing in the vicinity of a sample point but not retrieved on the rake were given a rating of zero for that location. These “zero” species were noted as being present on the plant distribution maps (shown as an “X”), but “zero” ratings were excluded from calculations of plant community metrics and statistics (not treated as denoting presence). At each location, we also documented water depth and overall plant height.

**Figure 1.** Designated sample locations for the 2019 Crooked Lake plant survey. Darker shaded area  $>15$  ft (based upon MDNR bathymetric map).



**Figure 2.** Sampling effort (number of locations sampled) within successive 3-ft depth zones



## Results

### Statistical Summary of Findings

**Table 1.** Littoral frequency (% occurrence) and abundance (mean density score) of plant species found in Crooked Lake (Anoka Co., MN) during surveys conducted in August of 2016 to 2019. % Occurrence and Mean Density (0-4 scale) were calculated using all littoral points (water depth ≤15 ft). Plant taxa that were observed growing in the lake but not retrieved in any rake samples are noted as being present (P).

PLANT TAXA	COMMON NAME	% OCCURRENCE			
		2016	2017	2018	2019
<b>ALL TAXA</b> (combined)		<b>72</b>	<b>73</b>	<b>75</b>	<b>85</b>
<b>SUBMERSED TAXA</b>					
<i>Myriophyllum spicatum</i> *	Eurasian watermilfoil	60	1	6	P
<i>Ceratophyllum demersum</i>	Coontail	50	25	26	31
<i>Chara</i> sp.	Muskgrass	41	42	42	46
<i>Potamogeton illinoensis</i>	Illinois pondweed	29	38	28	28
<i>Stuckenia pectinata</i>	Sago pondweed	17	38	23	11
<i>Najas guadalupensis</i>	Southern naiad	6	3	18	38
<i>Eleocharis acicularis</i>	Needle spikerush	1	1	1	P
<i>Potamogeton crispus</i> *	Curly-leaf pondweed	1	16	1	P
<i>Potamogeton pusillus</i>	Small pondweed	1	5	4	5
<i>Heteranthera dubia</i>	Water stargrass	1	5	14	14
<i>Najas flexilis</i>	Slender naiad	–	6	15	1
<i>Utricularia vulgaris</i>	Common bladderwort	–	3	5	3
<i>Potamogeton gramineus</i>	Variable pondweed	–	P	3	–
<i>Potamogeton zosteriformis</i>	Flat-stem pondweed	–	2	1	6
<i>Utricularia minor</i>	Small bladderwort	–	–	1	–
<i>Potamogeton nodosus</i>	Long-leaf pondweed	–	–	1	–
<b>FLOATING TAXA</b>					
<i>Nymphaea odorata</i>	White waterlily	17	22	20	18
<i>Lemna minor</i>	Small duckweed	13	5	1	1
<i>Spirodela polyrhiza</i>	Large duckweed	7	2	1	5
<i>Wolffia columbiana</i>	Common watermeal	4	2	1	P
<i>Nuphar variegata</i>	Spatterdock	1	P	1	1
<i>Lemna trisulca</i>	Star duckweed	–	1	1	–
<b>EMERGENT TAXA</b>					
<i>Typha</i> sp.	Cattail	2	1	1	P
<i>Lythrum salicaria</i>	Purple loosestrife	–	–	P	–
<i>Schoenoplectus acutus</i>	Hard-stem bulrush	P	P	P	P

\* Invasive, non-native species

**Table 2.** Summary of Crooked Lake plant community metrics from surveys in August of 2016–2019.





**CROOKED LAKE**

<b>WHOLE-LAKE METRICS</b>	<b>2016</b>	<b>2017</b>	<b>2018</b>	<b>2019</b>
Lake Area (acres)	116	116	116	116
Total Points Sampled	179	177	180	183
Vegetated Area (acres)	80	70	66	61
Area with Veg. to Surface (acres)	36	24	23	16
Max Depth of Growth (95%)	14.0 ft	12.5 ft	9.9 ft	11.6 ft
Native Submersed Taxa	10	12	14	13
Native Floating/Emergent Taxa	7	8	8	7
Non-Native Submersed Taxa	2	2	2	2

<b>LITTORAL METRICS</b>	<b>2016</b>	<b>2017</b>	<b>2018</b>	<b>2019</b>
Littoral Area (≤15 ft, acres)	84	85	87	83
Littoral Points Sampled	151	154	158	149
% Littoral Points Vegetated	95%	82%	75%	85%
Mean Plant Height	2.7 ft	1.4 ft	1.0 ft	1.2 ft
% of Max Littoral Biovolume	52%	34%	28%	29%
Mean Native Taxa / Point	1.5	2.0	2.0	2.1
Simpson’s Diversity	0.85	0.87	0.89	0.87
Floristic Quality (FQI)	17.9	22.0	24.0	21.6
AMCI Score (Nichols et al. 2000)	47	51	52	47

**Table 3.** Overview of rake density scores used to document plant abundance

<b>Density Score</b>	<b>Rake Coverage</b>	<b>Description</b>
1		Only a few plants retrieved
2		Full length of rake head covered, but tines only partially covered
3		Plants completely cover the rake head and tines
4		Enough plants to cover rake head and tines multiple times

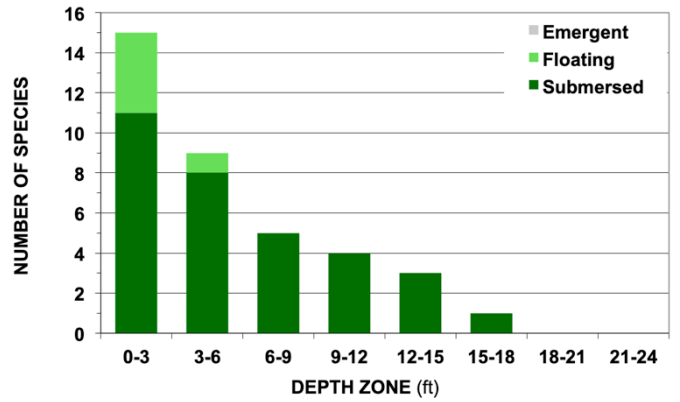
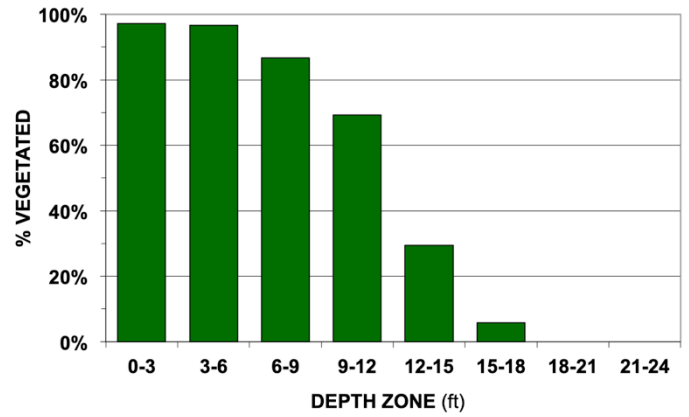
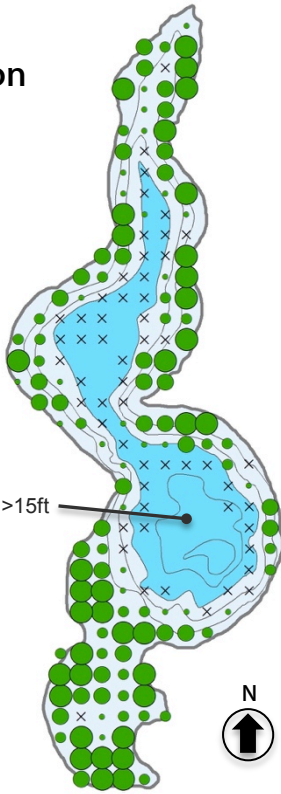
## 2019: Crooked Lake – Aquatic Plant Community

### All Vegetation

#### Density (1-4)

- × No plants
- 1
- 2
- 3
- 4

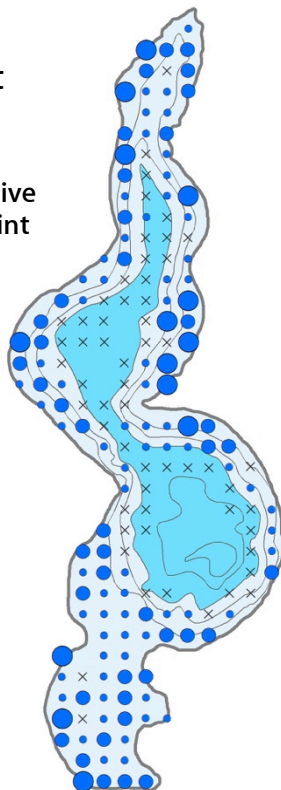
Darker shaded area >15ft



### Native Plant Diversity

#### Number of Native Species per Point

- × None
- 1-2
- 3-4
- 5-6



Surveyed: Aug 8, 2019

Methods: Rake, Sonar

Surveyor: JA Johnson



**Certified Lake Manager**  
www.NALMS.org

## 2019: Crooked Lake – Invasive Aquatic Plants

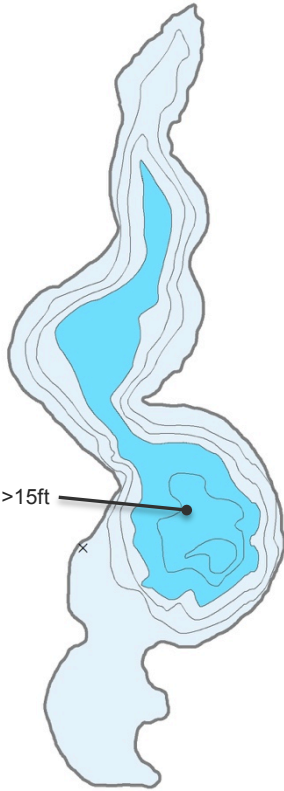
### Eurasian Watermilfoil

Density (1-4)

× In vicinity

- 1
- 2
- 3
- 4

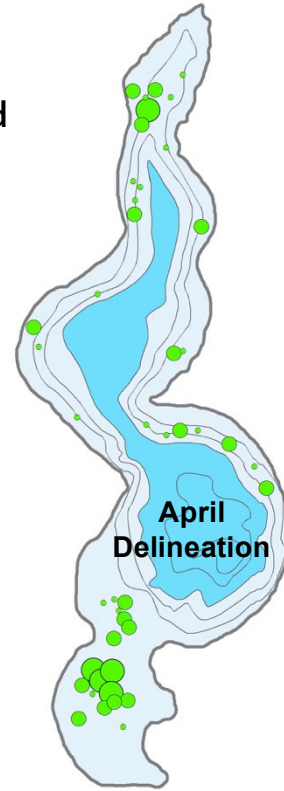
Darker shaded area >15ft



### Curlyleaf Pondweed

Density (1-3)

- 1
- 2
- 3



## 2019: Crooked Lake – Native Aquatic Plants

### Muskgrass (Chara)

Density (1-4)

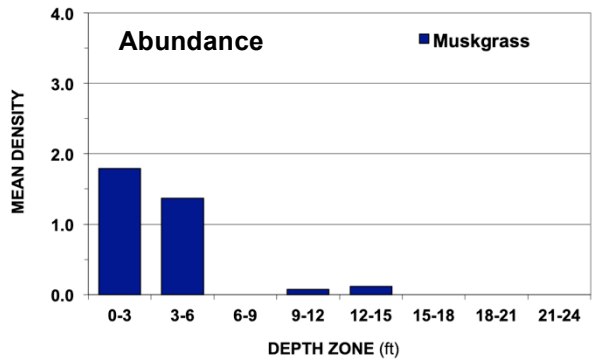
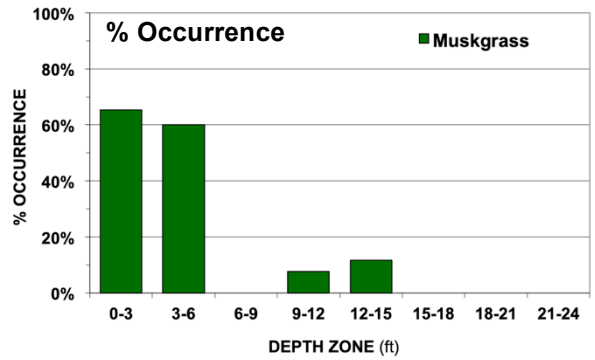
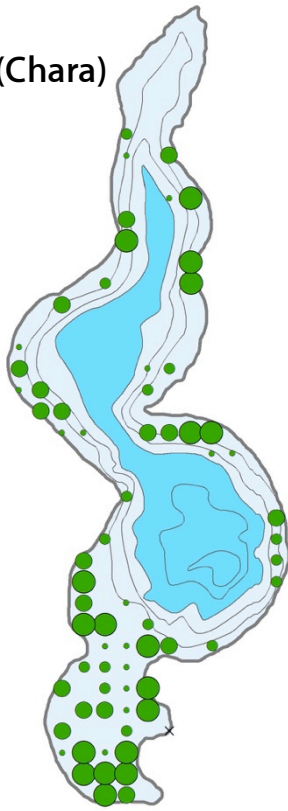
× In vicinity

● 1

● 2

● 3

● 4



### Illinois Pondweed

Density (1-4)

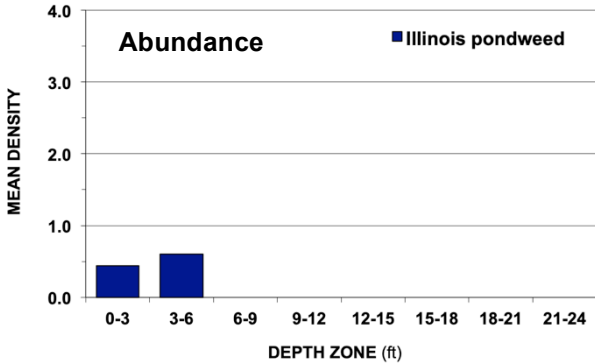
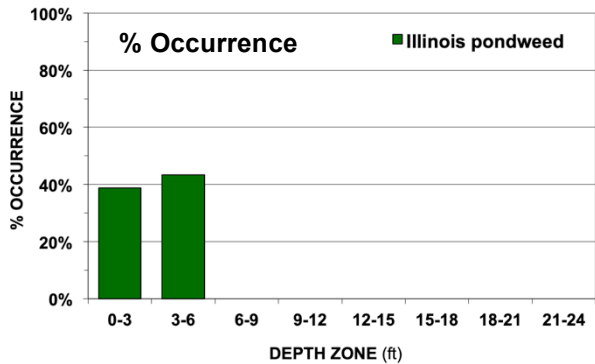
× In vicinity

● 1

● 2

● 3

● 4



## 2019: Crooked Lake – Native Aquatic Plants

### Coontail

Density (1-4)

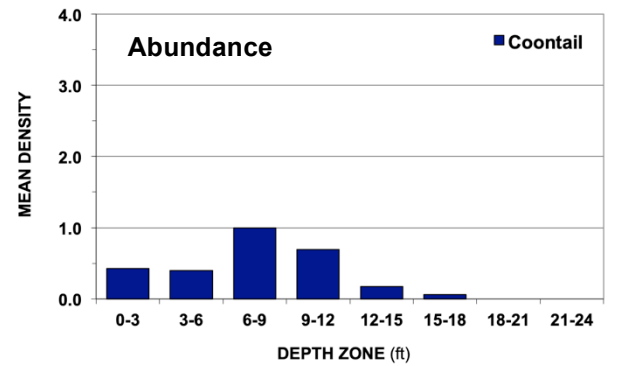
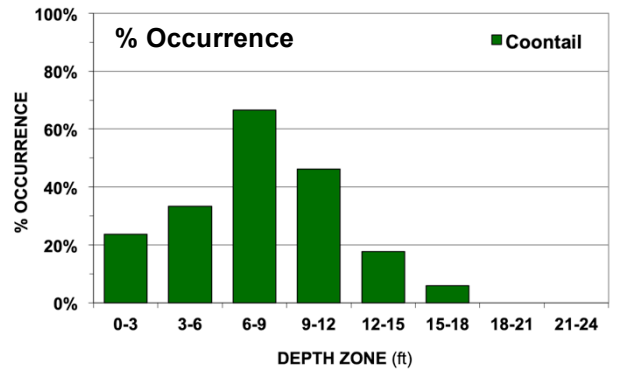
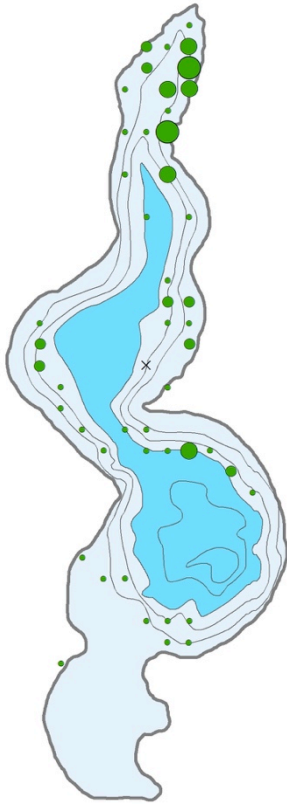
× In vicinity

● 1

● 2

● 3

● 4



### Sago Pondweed

Density (1-4)

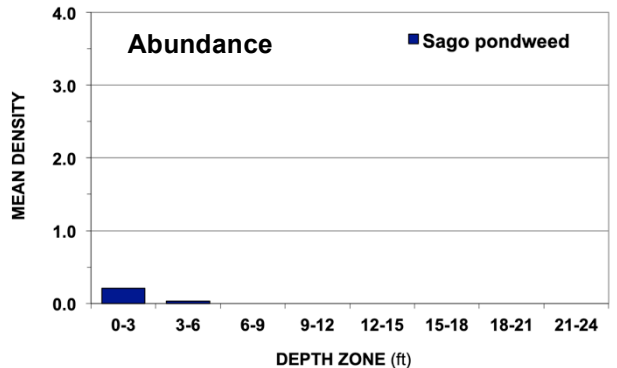
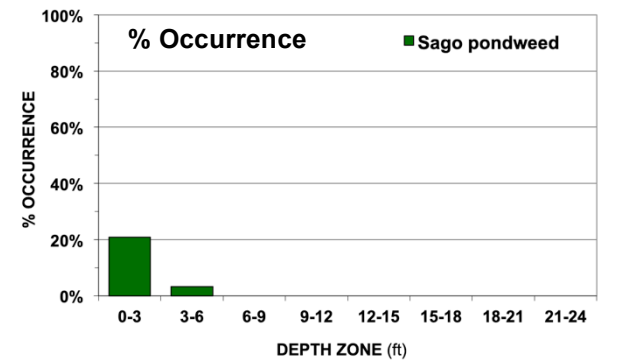
× In vicinity

● 1

● 2

● 3

● 4





## 2019: Crooked Lake – Native Aquatic Plants

